

Title:

## Certificate of Analysis (CoA)

**Date:** 4/21/2026  
**Date Tested:** 4/20/2026  
**Customer:** Finnrick  
**Testing material:** BPC-157\_TB-500  
**Lot Number:** PT-4802A1A8F7EA-1  
**BT Sample ID:** 005000039752737  
**Labeled Peptide**  
**Content/Potency:** 20 mg  
**Storage:** R.T.  
**Visual Description:** Small clear vial: white sample, white label, silver crimp, red plastic cap.  
**Labeled as:** BPC-157\_TB-500  
**Manufacturer:** n/a  
**Testing Purpose:** FTIR and HPLC analysis for the identification, purity, potency and composition of a peptide product. It does not provide information on particulate matter, microbial contamination or presence of endotoxins.



Test	Method	Specification	Result
General Appearance	USP <630>	white powder	white powder
Mass	USP <41>	As recorded	92.4 mg
FTIR Identification and Composition Analysis	USP <197A>	Sample spectrum should confirm the content of peptide via characteristic bands	FTIR sample spectrum confirms the presence of BPC-157_TB-500 with addition of excipient(s)/fillers.
HPLC Purity of Peptide Assay	USP <621>	Specifications: $\geq 98\%$	99.6 %
HPLC Potency Assay	USP <621>	Specifications: 90 – 110% of 20 mg	BPC-157 11.3 mg (56.6 %) TB-500 10.6 mg (53.1 %)
Peptide-to-Excipients Ratio	USP <1151>	Recommended ratios of (1:2) to (1:10) for (peptide: excipients)	21.9 : 70.5 mg (1:3.2)

The results of the CoA relate only to the item(s) tested and applied to the sample as received.

Andrea Castro, AS  
 Scientist-II  
 BTLabs

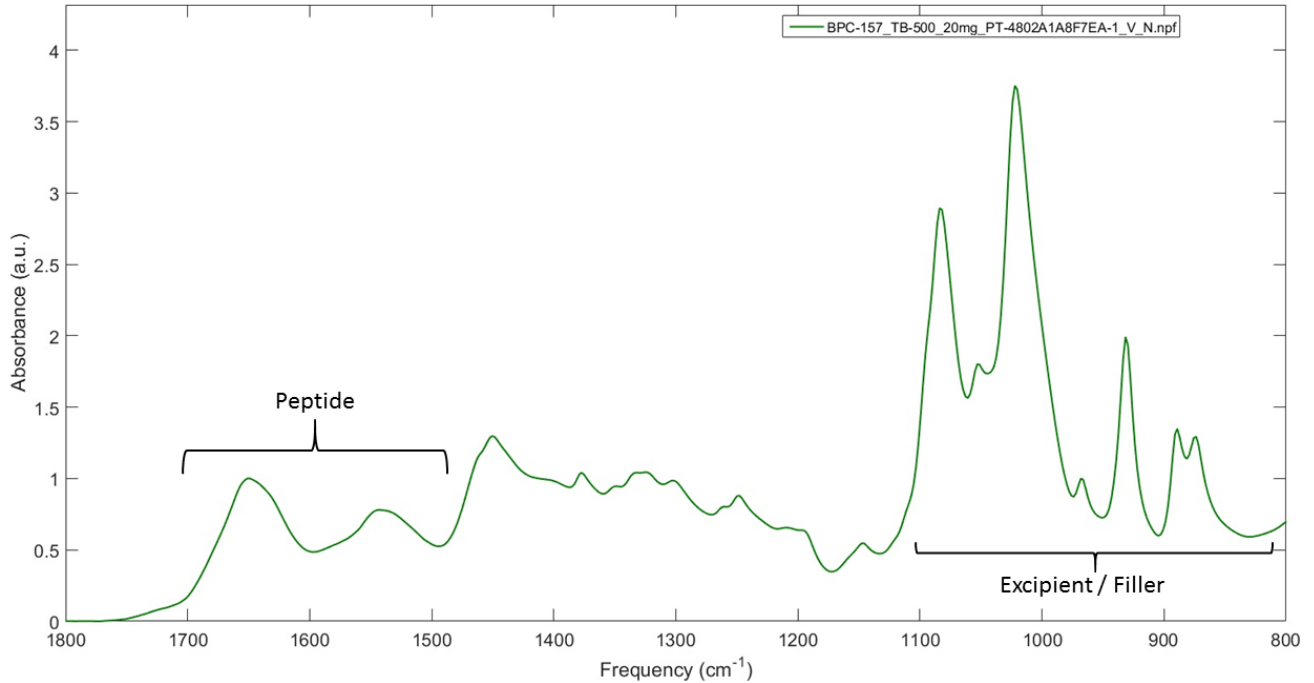
Verna Zheng, AS  
 Scientist-II  
 BTLabs

5730 Corporate Way | Suite 220 | West Palm Beach, FL 33407  
 Phone: (561) 625-0133  
 E-mail: [info@btlabtesting.com](mailto:info@btlabtesting.com) | Website: <https://btlabtesting.com>

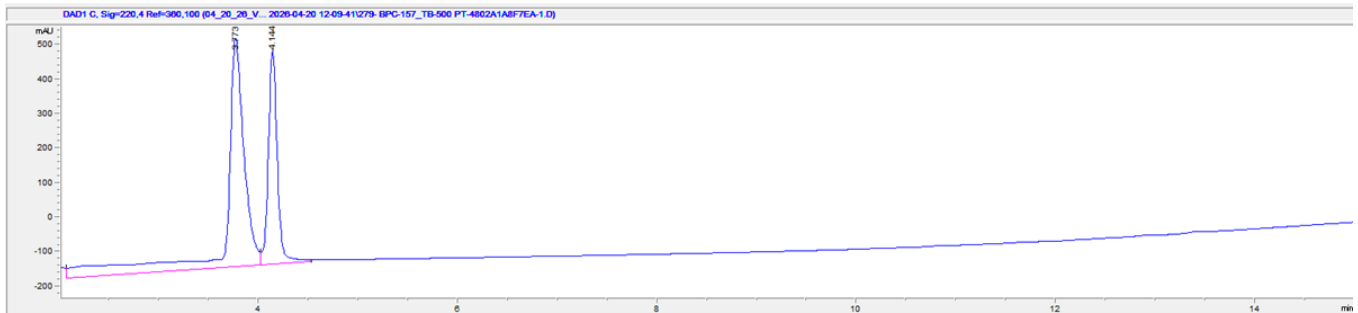
Title:

## Certificate of Analysis (CoA)

### FTIR ID and Composition Analysis: BPC-157 TB-500 Lot PT-4802A1A8F7EA-1



### HPLC Purity and Potency Assay @ 220 nm: BPC-157 TB-500 Lot PT-4802A1A8F7EA-1



#### BPC-157 TB-500 Lot PT-4802A1A8F7EA-1 @ 220 nm

Peak #:	Retention Time (min)	Area (mAU*s)
1	3.773	7085.7
2	4.144	3915.5